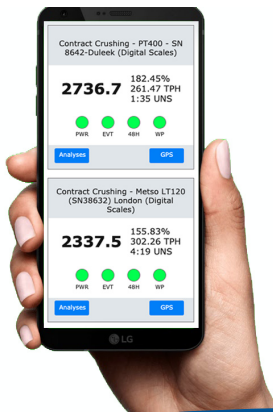
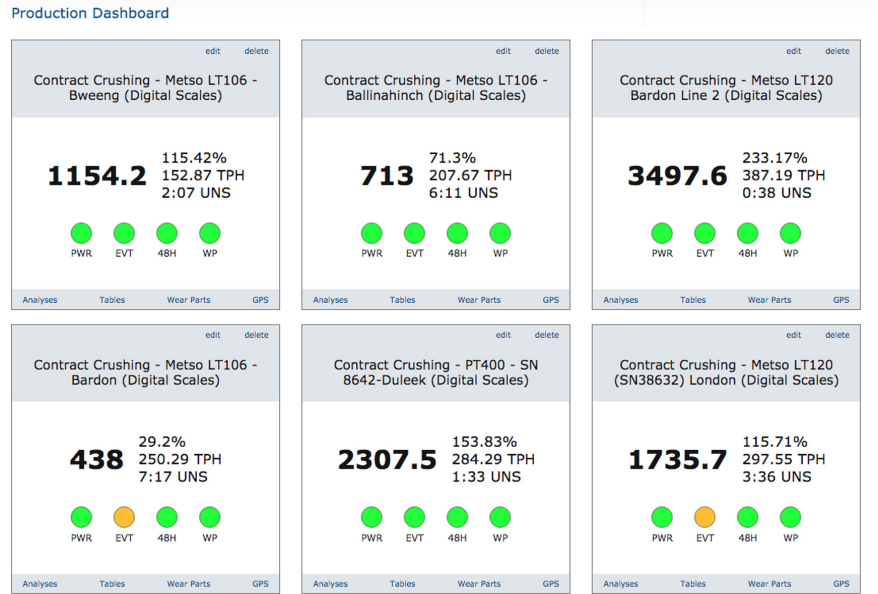


Comprising 3 powerful analytical tools; a **Production Dashboard**, a **Performance Log** and a **Wear Parts Log**, Multitrack helps you to visualise your production day, eliminate unplanned downtime & idling, and analyse your wear parts usage and economy.

Multitrack Belt Scales Monitoring is leading the way in web-based **aggregate production monitoring**. Our application consolidates data from all your belt scales, regardless of brand, into an easy-to-navigate cloud based solution on **your desktop** or **mobile**.



Realtime Data



Production Dashboard

- Real Time** numerical display of:
- Tonnage today
 - TPH
 - % of target
 - Lost production hours
- Very visual and factual information
- Real Time** diode display of:
- Power status
 - Production Event status,
 - Recent production status
 - Wear Parts status
 - Calibration status

Performance Log

- Real Time** Logging and categorisation of data
- Generation of tables, charts and graphs
 - Analysis and KPIs
 - Automated email reports and URLs

Wear Parts Log

- Logs wear parts usage and economy by logging tonnage and engine hours
- Automated wear parts alert
- Exportable as an XLS

