

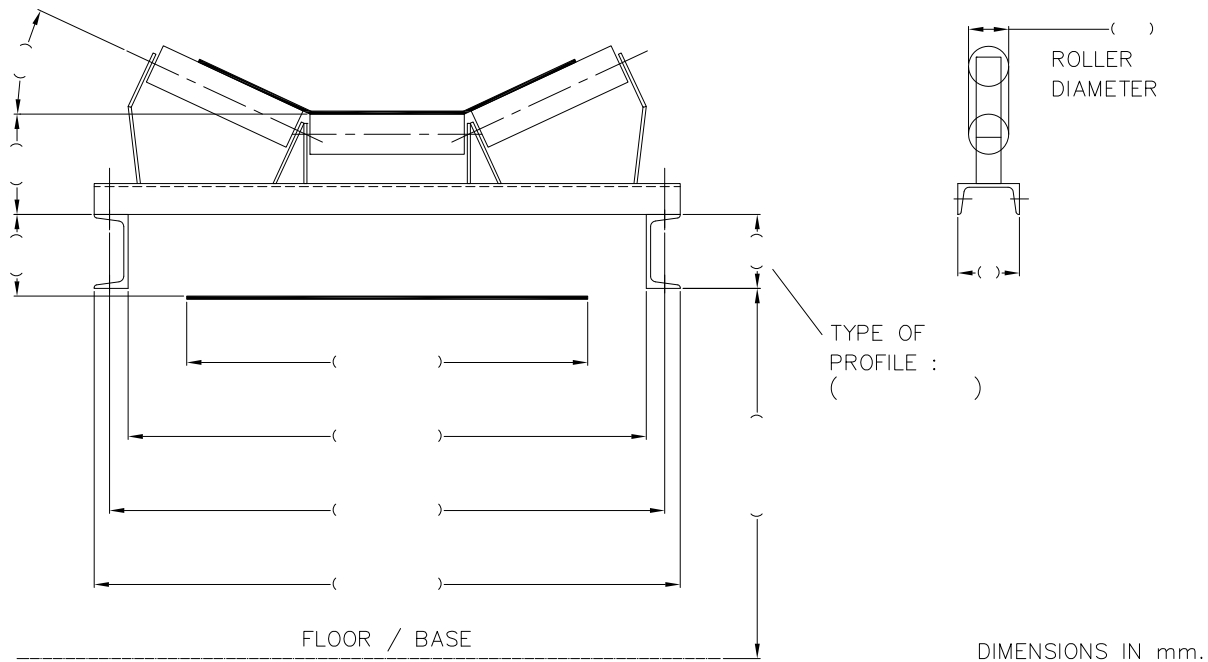
TO BE COMPLETED BY CUSTOMER :

Customer Name and Location \_\_\_\_\_  
 Installation / Belt Name : \_\_\_\_\_  
 Installation / Belt Tag Number : \_\_\_\_\_  
 Drawing Number : \_\_\_\_\_

Product : \_\_\_\_\_ Density (kg/ltr) : \_\_\_\_\_  
 Belt Capacity (ton/hr) : \_\_\_\_\_ Belt Speed (m/s) : \_\_\_\_\_  
 Belt Length (mtr) : \_\_\_\_\_ Belt Width (mm) : \_\_\_\_\_  
 Belt Height (mm) : \_\_\_\_\_ Idler Distance (mm) : \_\_\_\_\_  
 Belt Inclination (°) : \_\_\_\_\_ Taildrum Diameter (mm) : \_\_\_\_\_

Construction Material : [ ] Steel Coated / [ ] Stainless Steel – 304  
 Electronics Housing : [ ] Panelmounting / [ ] Fieldmounting – IP Class 65  
 Options : \_\_\_\_\_

Required Accuracy (%) : \_\_\_\_\_  
 Special Circumstances : \_\_\_\_\_



TO BE COMPLETED BY SUPPLIER :

Frame Type : \_\_\_\_\_ Remarks : \_\_\_\_\_  
 Frame Material : \_\_\_\_\_  
 Loadcell Type : \_\_\_\_\_  
 Number of Loadcells : \_\_\_\_\_  
 Loadcell Capacity (kg) : \_\_\_\_\_  
 Speed Pickup Type : \_\_\_\_\_  
 Electronics : \_\_\_\_\_  
 Accuracy (%) : \_\_\_\_\_  
 Special : \_\_\_\_\_

	Scale: 1:1	Drawn: .	Rev.	
	Dimension: mm	Checked: .	Rev.	
	Int.Ref.:	Date: .	Rev.	
		Title: CUSTOMER DATASHEET FOR BELTSCALES		Roughness: Unless mentioned otherwise: NEN 630 Dimensional tolerance: Unless mentioned otherwise: NEN 2365
		Ordernr:		Size: A4
tel. +31 (0) 26 472 1319 / www.RiceLake.eu		Property of Master Engineering B.V. Reproduction or disclosure to third parties in any form, whatsoever is not allowed without written consent of the proprietors.		