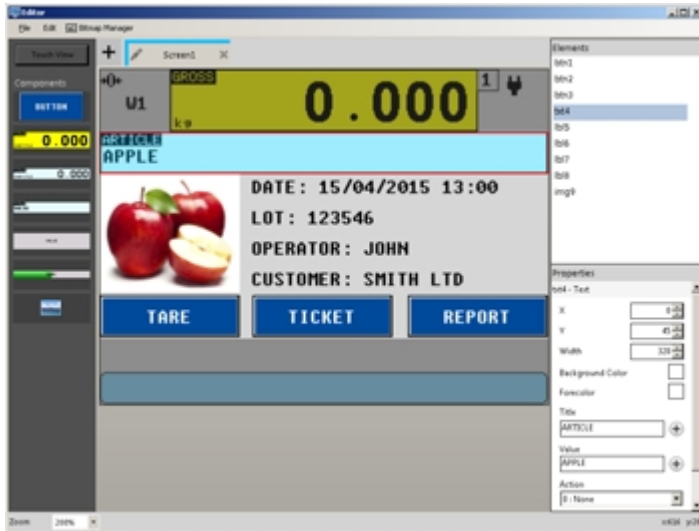


DiniDisplayTool

DINI DISPLAY TOOL: Software for the quick customization of the display



DINI DISPLAY TOOL allows you to quickly customize the interface of the indicator with touch screen, of the 3590ET and 3590EGT range.

Working in cooperation with:

WMS SCALES TECHNOLOGY SRL
FAGETU IERII, NR. 54 - 407321 - IARA - ROMANIA
Tel. 40745312637
office@centrul-de-cantare-si-balante.ro

The best solution
for advanced industrial
applications

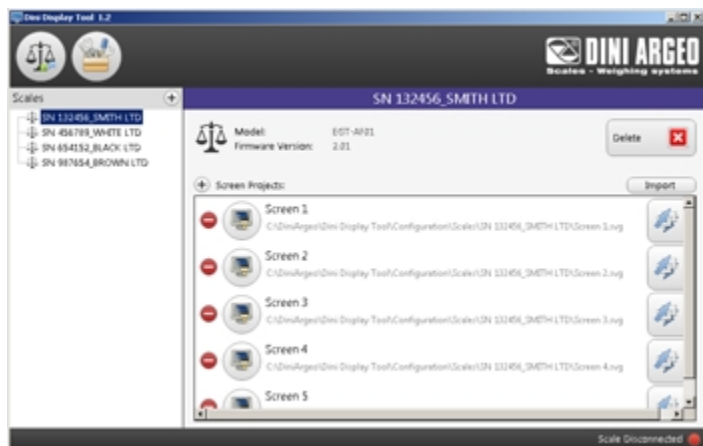
FEATURES

- Easy and intuitive interface
- Database of executed customizations
- Import / Export customizations
- Images management and possibility to combine them to articles, customers, PLUs, etc.
- Logos management
- Free entry of items such as:
 - buttons
 - touch areas
 - images
 - bargraph
 - textual and numeric fields
- Association of the functions to be performed to the items

PC MINIMUM REQUIREMENTS

- Pentium IV or equivalent - 256 Mb Ram
- 200 MB of empty space on disk
- Windows 10
- Internet Explorer 6.0 SP1 or greater
- Framework 2.0
- Monitor with 800x600 minimum resolution, 256 colours

DETAIL 1



Customizations database example



www.diniargeo.com

“YOUR WORLDWIDE PARTNER FOR WEIGHING”

DINI ARGEO
FRANCE sarl
France

DINI ARGEO
GMBH
Germany

DINI ARGEO
UK Ltd
United Kingdom

DINI ARGEO WEIGHING
INSTRUMENTS Ltd
China

DINI ARGEO
OCEANIA
Australia



COMPANY HEADQUARTERS

Via Della Fisica, 20
41042 Spezzano di Fiorano - Modena - Italy
Tel. +39.0536 843418

WMS SCALES TECHNOLOGY SRL

FAGETU IERII, NR. 54 - 407321 - IARA - ROMANIA

Tel. 40745312637

office@centrul-de-cantare-si-balante.ro

SALES AND TECHNICAL ASSISTANCE SERVICE

All the specifications and images can be subject to variations and upgrades without prior notice.